

## EMG 10-OV-120AC/24DC/1

Order No.: 2944261

The illustration shows version EMG 10-OV, with DC voltage output, max. 1 A

<http://eshop.phoenixcontact.de/phoenix/treeViewClick.do?UID=2944261>

Power optocoupler, with light indicator and protection circuits in the input and output circuits, input: 120 V AC, output: 5-36 V DC/ max. 1 A

Commercial data	
EAN	4017918081560
Pack	10 Pcs.
Customs tariff	85364900
Weight/Piece	0.04184 KG
Catalog page information	Page 112 (IF-2007)

<http://www.download.phoenixcontact.com>  
Please note that the data given here has been taken from the online catalog. For comprehensive information and data, please refer to the user documentation. The General Terms and Conditions of Use apply to Internet downloads.

Technical data	
<b>Input data</b>	
Nominal input voltage $U_N$	120 V AC
Input voltage range in reference to $U_N$	0.8 ... 1.1
Switching threshold "0" signal, voltage	$\leq 30$ V
Switching threshold "0" signal in reference to $U_N$	$\leq 0.25$
Switching threshold "1" signal voltage	$\geq 96$ V
Switching threshold "1" signal in reference to $U_N$	$\geq 0.8$
Typical input current at $U_N$	4 mA
Typical response time	25 ms
Typical turn-off time	25 ms
Status display	Yellow LED

Name of protection	Polarity protection
Protective circuit/component	Polarity protection diode
Transmission frequency	10 Hz

#### Output data

Output nominal voltage	24 V DC
Output nominal voltage range	5 V DC ... 36 V DC
Limiting continuous current	1 A
Surge current	2 A (t = 1 s)
Peak offstate voltage	45 V DC (Collector-emitter reverse voltage)
Voltage drop at max. limiting continuous current	≤ 1 V
Output circuit	2-conductor floating
Name of protection	Polarity protection
Protective circuit/component	Polarity protection diode

#### Connection data

Type of connection	Screw connection
Stripping length	8 mm
Screw thread	M3
Conductor cross section solid min.	0.2 mm <sup>2</sup>
Conductor cross section solid max.	4 mm <sup>2</sup>
Conductor cross section stranded min.	0.2 mm <sup>2</sup>
Conductor cross section stranded max.	2.5 mm <sup>2</sup>
Conductor cross section AWG/kcmil min.	24
Conductor cross section AWG/kcmil max	12

#### General data

Length	75 mm
Width	10 mm
Height	102 mm
Test voltage input/output	3.5 kV AC
Ambient temperature (operation)	-20 °C ... 50 °C
Ambient temperature (storage/transport)	-20 °C ... 70 °C
Mounting position	Any
Assembly instructions	In rows with zero spacing
Operating mode	100% operating factor

Degree of protection	IP20
Inflammability class in acc. with UL 94 (housing)	V0
Standards/regulations	DIN VDE 0110
Rated surge voltage / insulation	Basic insulation

### Certificates / Approvals

#### Approval logo



#### requested approbations

Certification	GOST
---------------	------

### Accessories

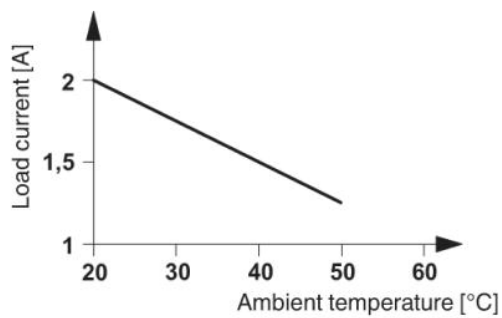
Item	Designation	Description
------	-------------	-------------

#### Marking

2947585	EMG-SGKS 10	Equipment marker, narrow
---------	-------------	--------------------------

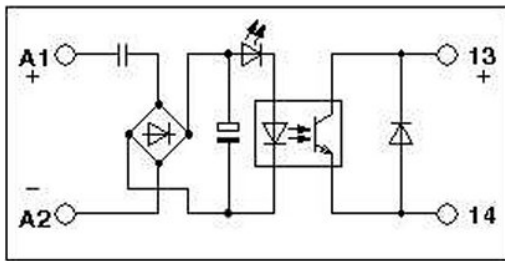
### Drawings

#### Diagram



Circuit diagram

---



**Address**

PHOENIX CONTACT Inc., USA  
586 Fulling Mill Road  
Middletown, PA 17057, USA  
Phone (800) 888-7388  
Fax (717) 944-1625  
<http://www.phoenixcon.com>



© 2008 Phoenix Contact  
Technical modifications reserved;